

Special Educational Needs  
and Disability Information,  
Advice & Support Service

# sendiass

in Suffolk

## The Local Offer



Information,  
Advice & Support  
Services Network  
for SEND

[www.suffolksendiass.co.uk](http://www.suffolksendiass.co.uk)

# The Local Offer

---

## What the law says.

The SEND Code of Practice says that every local authority must publish a Local Offer. The Local Offer tells you what support is available for children and young people with special educational needs (SEN) and/or disabilities, and their families. It should include information about education, health and care provision. It should also tell you about training, employment and independent living for young people with special educational needs and/or disabilities.

You can find the Local Offer for Suffolk at [www.suffolklocaloffer.org.uk](http://www.suffolklocaloffer.org.uk)

You can access the **SEND Code of Practice** online at [www.gov.uk](http://www.gov.uk) and search 'SEND Code of Practice'.

## Who is it for?

The Local Offer is for:

- children and young people with SEN and/or disabilities from birth to 25
- their parents and carers
- practitioners and professionals.

The **SEND Code of Practice** says that the Local Offer should:

- provide clear, comprehensive, accessible and up-to-date information about the available provision and how to access it
- make provision more responsive to local needs and aspirations by directly involving disabled children and those with SEN and their parents, and disabled young people and those with SEN, and service providers in its development and review (4.2)

## What is the idea?

The Local Offer should:

- make it easier to find out what you need to know
- give you information about what is available
- tell you where you can get further information.

The Local Offer should also make services more responsive to local needs.



## What does it include?

The Local Offer includes information on:

- how children and young peoples' needs are identified
- how their needs are assessed
- the special educational, health and social care provision for children and young people with SEN or disabilities
- opportunities for training and employment
- support for independent living
- how provision is funded
- leisure activities and support groups
- where you can find more information, advice and support
- arrangements for travel
- help available to resolve disagreements.

The Local Offer must also tell you about services provided outside your area which local people are likely to use.

You can find the full list of what must be included in the **SEND Code of Practice** section 4.30.



## How can I get involved?

The local authority **must** involve children and young people with SEN and/or disabilities, and their parents and carers in preparing and reviewing the Local Offer. If you would like to be involved, or make some comments, you can find out more on the **[www.suffolklocaloffer.org.uk](http://www.suffolklocaloffer.org.uk)**

Parents who want to be more involved in developing and reviewing the Local Offer can contact Suffolk Parent Carer Network at **[admin@spcn.org.uk](mailto:admin@spcn.org.uk)**

The local authority must publish what children, young people and parents tell them about the Local Offer. It must also say clearly what it will do about the comments it has received.

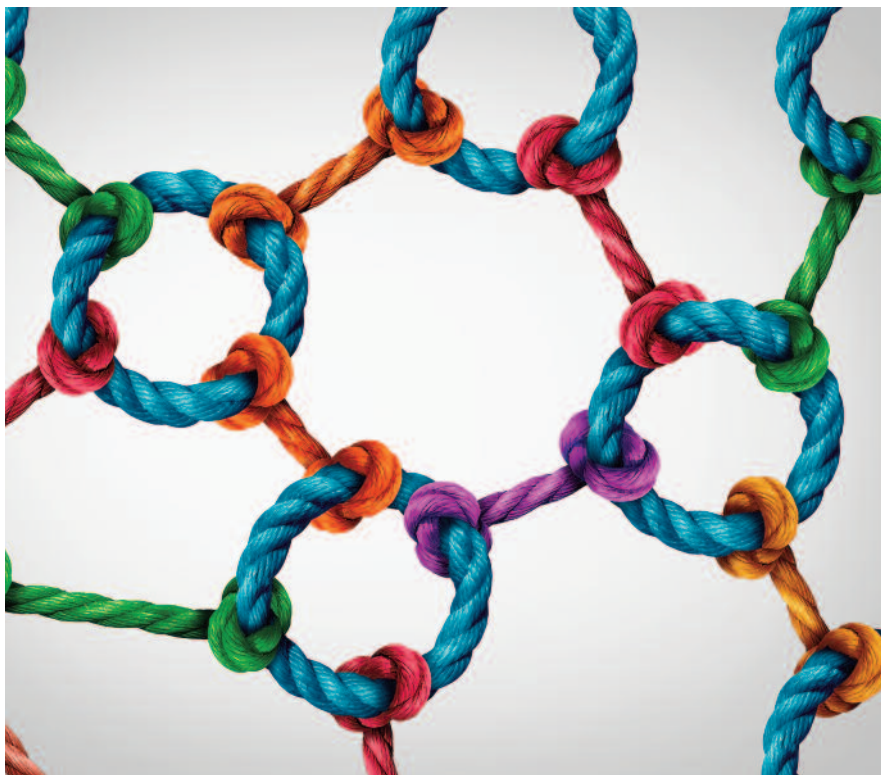
## Where can I get further information, advice or support?

Chapter 4 of the **SEND Code of Practice** tells you more about the Local Offer.

You can find the Local Offer for Suffolk at **[www.suffolklocaloffer.org.uk](http://www.suffolklocaloffer.org.uk)**

**SENDIASS** can also give you:

- information and advice about SEN and disability support and provision
- more information about local services, organisations, and resources which might help
- advice and support to get more involved.



## Useful Links

Activities Unlimited (short breaks and leisure activities for disabled children and young people up to age 25 in Suffolk) [www.activities-unlimited.co.uk](http://www.activities-unlimited.co.uk)

Anglia Care Trust (local SEND mediation services) [www.angliacaretrust.org.uk](http://www.angliacaretrust.org.uk)

Contact (for families with disabled children) [www.contact.org.uk](http://www.contact.org.uk)

Child Law Advice (education law advice for families) [www.childlawadvice.org.uk](http://www.childlawadvice.org.uk)

Council for Disabled Children (umbrella body for the disabled children's sector) [www.councilfordisabledchildren.org.uk](http://www.councilfordisabledchildren.org.uk)

SEND Code of Practice (explains the statutory duties of schools and local authorities) [www.gov.uk/government/publications/send-code-of-practice-0-to-25](http://www.gov.uk/government/publications/send-code-of-practice-0-to-25)

SEND Tribunals Service (organisation responsible for handling claims) [www.justice.gov.uk/tribunals/send](http://www.justice.gov.uk/tribunals/send)

The Source (for young people in Suffolk) [www.thesource.me.uk](http://www.thesource.me.uk)

Suffolk Local Offer (for the full range of services and support for children and young people with SEND) [www.suffolklocaloffer.org.uk](http://www.suffolklocaloffer.org.uk)

## Further Information

View our other information leaflets and resources at [www.suffolksendiass.co.uk/leaflets](http://www.suffolksendiass.co.uk/leaflets)



**Information:** You may find it helpful to look at our other leaflets and information on our website, social media channels and through our workshops and courses.



**Advice:** We provide unbiased information and advice about what the law says, the local authority's policies and procedures, and about the policy and practice in local schools or other settings.



**Support:** We can help you by listening to your views and concerns, and working with you to explore your options.

Special Educational Needs  
and Disability Information,  
Advice & Support Service

# sendiass

in Suffolk

Providing confidential and impartial information, advice and support to help children, parents and young people take part in decisions that affect their lives.



[www.suffolksendiass.co.uk](http://www.suffolksendiass.co.uk)



[enquiries@suffolksendiass.co.uk](mailto:enquiries@suffolksendiass.co.uk)



01473 265210



ADVICE4ME to 87007



If you need help to understand this information in another language please call **03456 066 067**.

Se precisar de ajuda para ler estas informações em outra língua, por favor telefone para o número abaixo.

**Portuguese**

Jeżeli potrzebujesz pomocy w zrozumieniu tych informacji w swoim języku zadzwoń na podany poniżej numer.

**Polish**

এই লেখাটি যদি অন্য ভাষাতে বুঝতে চান তাহলে নিচের নম্বরে ফোন করুন

**Bengali**

Jeigu jums reikia šios informacijos kita kalba, paskambinkite 03456 066 067

**Lithuanian**

Dacă aveți nevoie de ajutor pentru a înțelege această informație într-o altă limbă, vă rugăm să telefonați la numărul 03456 066 067

**Romanian**

Если для того чтобы понять эту информацию Вам нужна помощь на другом языке, позвоните, пожалуйста, по телефону 03456 066 067.

**Russian**

If you would like this information in another format, including audio or large print, please call **03456 066 067**.



Designed and printed by EFMS Design & Print  
Phone: 01473 260600