

SENDIASS

Special Educational Needs and Disability
Information, Advice and Support Service



Care and support needs 18+

Easy-read information for
young people



Contents

1

Section 1. Care and support needs 18+

Page 3

2

Section 2. Assessing care and support needs

Pages 4 - 6

3

Section 3. Useful Links

Page 7

4

Section 4. How to get in contact with us

Pages 8 - 10



Section 1. Care and support needs 18+



Many young people with special educational needs will need care and support after age 18.



Your views are really important and must be taken into account.



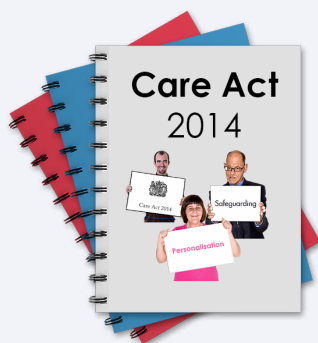
If you already receive support from Children's Social Care, they will work out if you might need support after your 18th birthday.

Section 2. Assessing your care and support needs



Assessment

Children's Social Care might ask Adult Social Care to assess your needs.



This is a Child's Needs Assessment.

It is sometimes called a transition assessment.



You (or your parent/carer) can also ask for assessment.

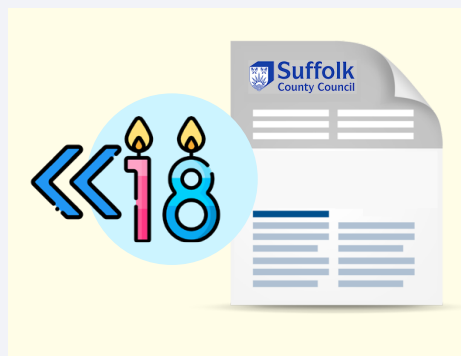
You might need some help to do this.



Information about how to do this is on the [Suffolk Local Offer website](#).



The local authority must tell you in writing if they decide not to do this assessment.



There is no exact time for this, but it must be before your 18th birthday.



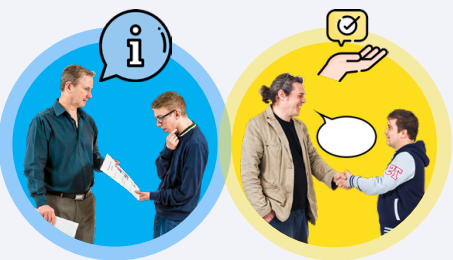
If you have an EHC plan - it can be helpful to do the child's needs assessment at the same time as a review.



There should be no gaps in support or services provided.



The local authority must let you know if you are likely to receive support from Adult Social Care beyond age 18.



They must also give you information and advice about what can be put in place to meet or reduce the needs.



Assessment

SENDIASS can help you ask for an assessment and make sure you understand everything.

Section 3. Useful Links



[Becoming an adult - Suffolk SENDIASS](#)

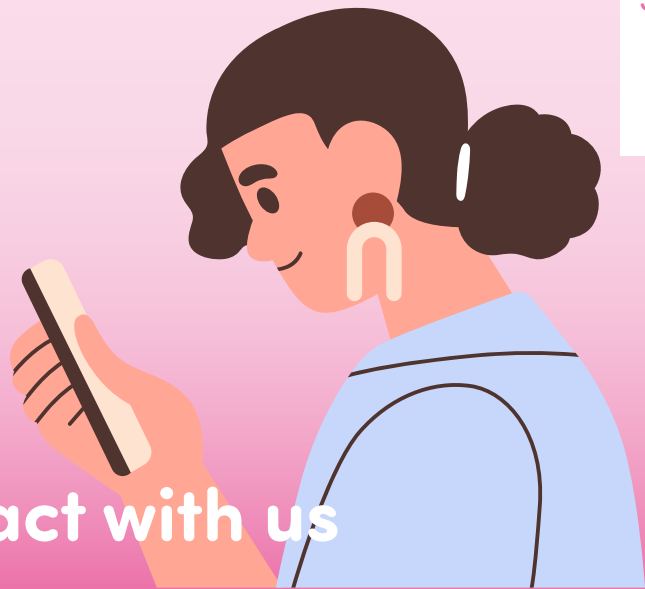


[Annual Reviews - Suffolk SENDIASS](#)



[Social care into adulthood - Suffolk SEND Local Offer](#)





Section 4. How to get in contact with us



SENDIASS can:



help you to understand this information



MY views



support you to share your views



explain what you can do if you disagree with what the local authority decides.



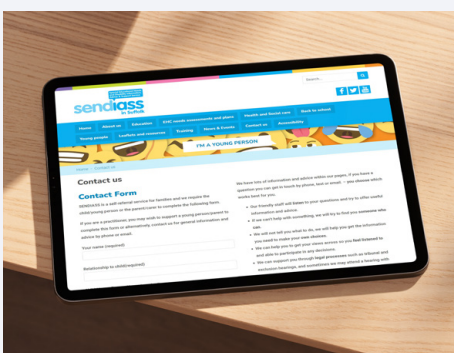
You can text us:

Text ADVICE4ME to 87007



You can e-mail us:

enquiries@suffolksendiass.co.uk



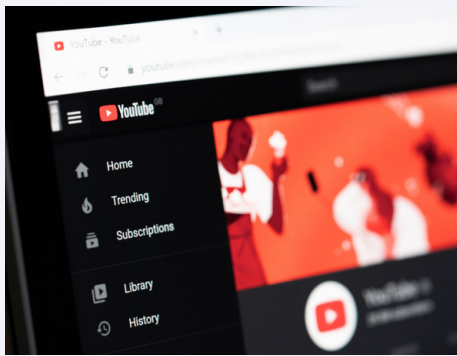
You can fill in a web form:

suffolksendiass.co.uk/contact-us



You can call us:

01473 265210



You can watch our videos on YouTube:

@suffolksendiass7456



**Scan the QR code with your phone to
visit our website.**



**If you need help to understand this
information in another language,
please contact us.**

A co-production group worked together to make this easy-read document. We created this document as people who are:

“Passionate, approachable and dedicated”

“Chilled, relaxed, kind, helpful, committed and caring”

“Supportive and kind with a good eye for detail”

“Kind, generous, funny, caring and committed”



Online:
thinklusive.org



e-mail:
hello@thinklusive.org



LinkedIn



Made by
Thinklusive